



FEATURES:



4 Occupancy



2 Bedroom



1 Bathroom



1 Car Parking



Dish Washer



Washing Machine



ABOUT THIS PROPERTY

Lawlers apartments have been a long-standing favourite with groups and families for many years due to their proximity to the centre of the Hotham Village, chair lifts, shuttle bus, restaurants and bars that Hotham has to offer. Lawlers 36A is perfect for small families looking for an affordable apartment option. There is easy access off Alfonso walk and is located only a short distance to the Village Chair lift. There is also one car space in Lawlers car park for your convenience. **Resort access permits are still required through Alpine Easy Access for the duration of your stay**

Check-In: After 4pm **Check-Out:** Before 10am.

Over Snow: 1 trips IN and 1 trips OUT included to assist with your luggage.

[Click Here To See Mt Hotham Village Directory](#)

KITCHEN & COOKING FACILITIES

Full Kitchen - Oven, Microwave, Dishwasher, Full Size Fridge

BEDROOMS & BEDDING CONFIGURATION

Bedroom 1: Queen Bed.

Bedroom 2: 1 x Single Bunk Beds.

BATHROOMS

1 x Bathroom

HEATING & COOLING FACILITIES

Electric Panel

LAUNDRY DETAILS

Washing Machine

ENTERTAINMENT FACILITIES

TV, DVD Player, Sound System

EXTRA FACILITIES

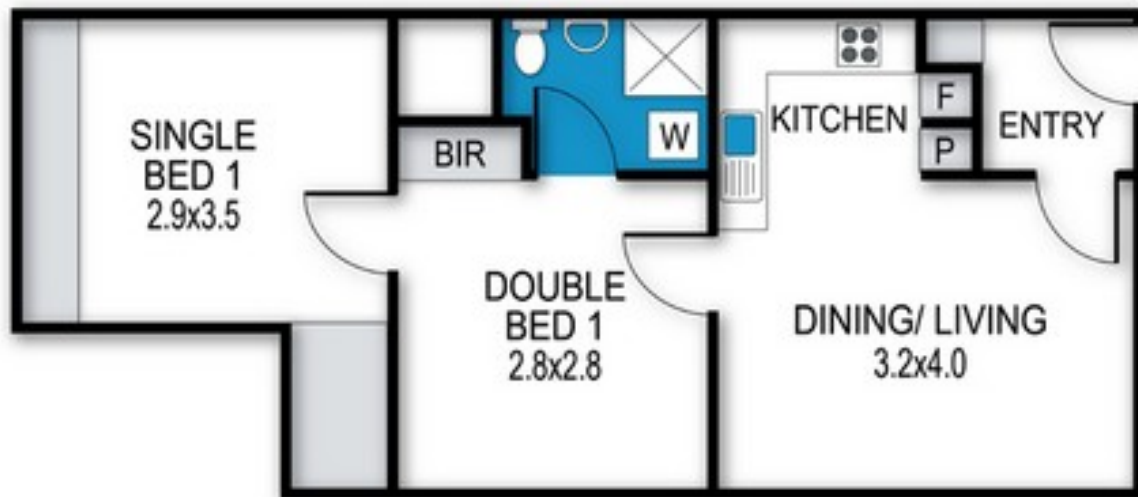
Personal Drying Cupboard

SMOKING

This is a Non-Smoking Apartment

Lawlers Apartments, Apartment 36A

36A_2 Lawlers Court, Mt Hotham



archistyle

Whilst every attempt has been made to ensure the accuracy of this floorplan, measurements of doors, windows, rooms and any other items are approximate only. The producer or the agent cannot be held responsible for any errors, omissions or misstatements. This plan is for illustrative purposes only and should be used as such.

Lawlers 36A

36A/Building 5 - Alfonso Walk, Hotham Heights, VIC. 3741



MT HOTHAM
ACCOMMODATION

