

# Chalet Hotham 13

13/1 Lawlers Court, Hotham Heights, VIC. 3741



## FEATURES:



4 Occupancy



1 Bedroom



1 Bathroom



Dish Washer



Strict NO Party Policy



Strict NO Pets Accepted



WIFI Internet



Full Kitchen



Linen Included



Spa Bath

## ABOUT THIS PROPERTY

---

The Jewel of the Mountain, Chalet Hotham has been a landmark at Mount Hotham for many years situated in one of the best locations available offering unsurpassed views. This development has been planned and undertaken to provide the very best in on snow accommodation. The apartments have been designed to include all modern appliances and fittings.

Apartment 13 is a superior front-facing one bedroom, one bathroom loft (2 Level) apartment that has a large private balcony with excellent views of the mountain. There is a fully equipped kitchen with European appliances including dishwasher and microwave.

**Check-In:** After 4pm **Check-out:** Before 10am.

**Over Snow:** 2 trips IN and 2 trips OUT included to assist with your luggage.

[Click Here To See Mt Hotham Village Directory](#)

## KITCHEN & COOKING FACILITIES

---

Full Kitchen: Oven, Microwave, Dishwasher, Bar Size Fridge,

## BEDROOMS & BEDDING CONFIGURATION

---

Bedroom 1: 1 x King\*

Lounge: 1 x Double fold-out sofa

\*King can be split into 2 single beds, please call the office to request

## BATHROOMS

---

1 x Bathroom with heated towel rails, spa bath & bathroom amenities

## HEATING & COOLING FACILITIES

---

- Gas Log Fire
- Hydronic heating

## LAUNDRY DETAILS

---

- Washing Machine
- Dryer

## ENTERTAINMENT FACILITIES

---

TV, Sound System

## EXTRA FACILITIES

---

- WIFI
- Private Ski locker
- Personal Drying Cupboard



## PARKING

---

Hotham overnight car parking - **Resort entry will need to be purchased**

## SMOKING

---

This is a **Non-Smoking** Apartment

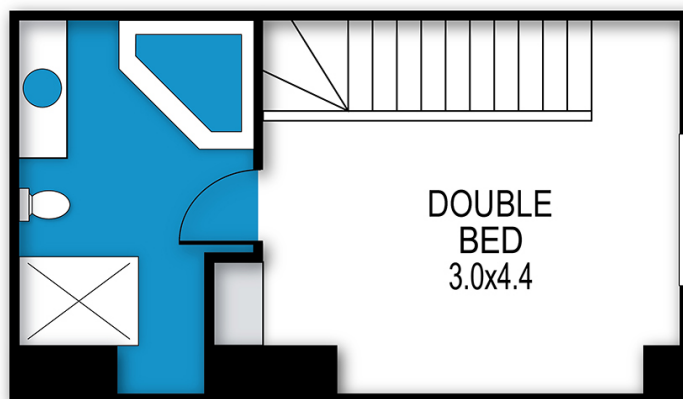
# Chalet Hotham 13

13/1 Lawlers Court, Hotham Heights, VIC. 3741

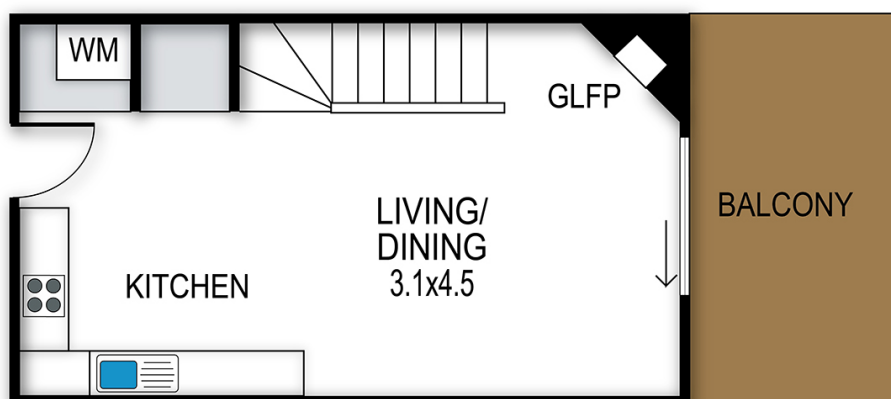


## Chalet Hotham, Apartment 13

13/1 Lawlers Court, Mount Hotham



UPPER LEVEL



LOWER LEVEL

archistyle

Whilst every attempt has been made to ensure the accuracy of this floorplan, measurements of doors, windows, rooms and any other items are approximate only. The producer or the agent cannot be held responsible for any errors, omissions or misstatements. This plan is for illustrative purposes only and should be used as such.

# Chalet Hotham 13

13/1 Lawlers Court, Hotham Heights, VIC. 3741



MT HOTHAM  
ACCOMMODATION

