



FEATURES:



12 Occupancy



4 Bedroom



2 Bathroom



1 Car Parking

ABOUT THIS PROPERTY

Lawlers apartments have been a long-standing favourite with groups and families for many years due to their proximity to the centre of the Hotham Village, chair lifts, shuttle bus, restaurants and bars that Hotham has to offer. Lawlers 30 'Above the Clouds' is a two level, four-bedroom, two-bathroom apartment with great views. This beautifully presented apartment has a wonderful feel and you will immediately feel like you are at home in the mountains. This apartment also includes one car space in Lawler's car park. Resort access permits are still required through Alpine Easy Access for the duration of your stay.

Check-In: After 4pm Check-out: Before 10am

Over Snow: 3 trips IN and 3 trips OUT included to assist with your luggage.

KITCHEN & COOKING FACILITIES

Full Kitchen
Full Size Fridge
Dishwasher
Microwave
Delonghi coffee machine - Coffee Beans Required
6 Burner Cooker

BEDROOMS & BEDDING CONFIGURATION

Bedroom 1: 1 x Double bed and 1 x set of Bunks

Bedroom 2: 2 x sets of Bunks

Bedroom 3: 1 x Double bed

Bedroom 4: 1 x Double bed

Linen, Towels and Bedding is provided for all beds.

BATHROOMS

Two bathrooms. Main Bathroom with separate powder room.

Second bathroom is shared with a laundry

HEATING & COOLING FACILITIES

Hydronic Heating

LAUNDRY DETAILS

Washing machine and clothes dryer in second bathroom

ENTERTAINMENT FACILITIES

Bluetooth Speaker
Book Collection
TV in Multiple Rooms:
TV Flat Screen 60" Plus
Wifi available in Winter

PARKING

1 Allocated Lawlers Car Park

PETS

Strictly no pets allowed

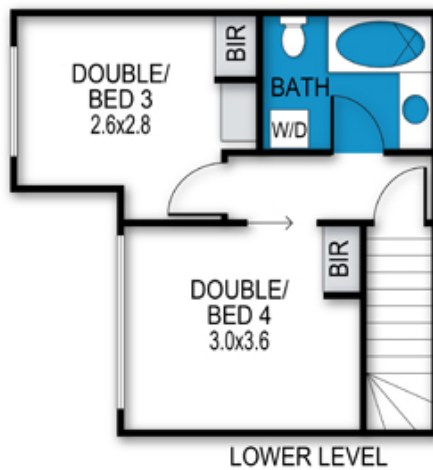
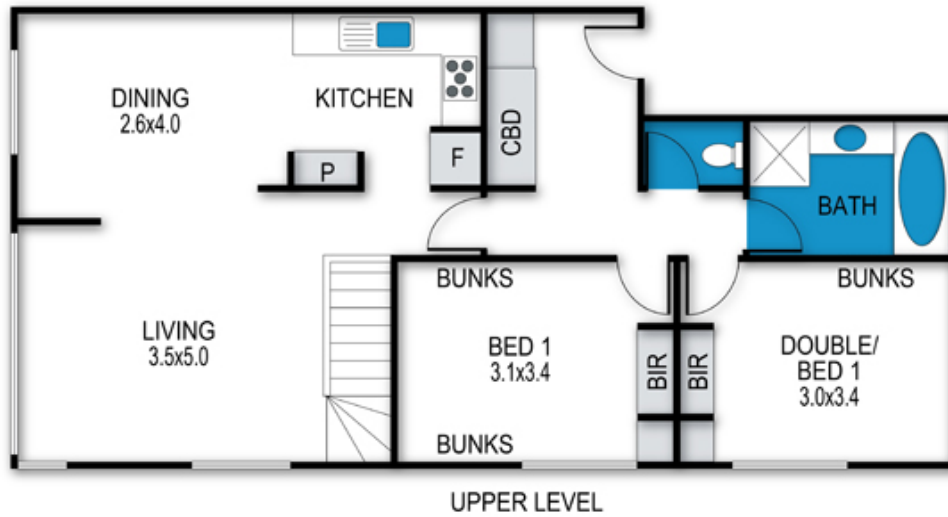
SMOKING

Strictly no smoking indoors



Lawlers Apartments, Apartment 30

30_2 Lawlers Court, Mt Hotham



archistyle

Whilst every attempt has been made to ensure the accuracy of this floorplan, measurements of doors, windows, rooms and any other items are approximate only. The producer or the agent cannot be held responsible for any errors, omissions or misstatements. This plan is for illustrative purposes only and should be used as such.