



## FEATURES:

---



8 Occupancy



3 Bedroom



1 Bathroom



1 Car Parking



Dish Washer



Washing Machine

## ABOUT THIS PROPERTY

---

Lawlers apartments have been a long-standing favourite with groups and families for many years due to their proximity to the centre of the Hotham Village, chair lifts, shuttle bus, restaurants and bars that Hotham has to offer. There is one car space in the Lawlers Car Park for your convenience. There is also one car space in Lawlers car park for your convenience. **Resort access permits are still required through Alpine Easy Access for the duration of your stay.**

**Check-In:** After 4pm **Check-out:** From 8am - 10am

**Check-In Location:** Proceed to the Corral Day Car Park and park in the loading zone next to the medical centre - You will then be required to come into our office located at Chalet Hotham to formalise your arrival and directions to Lawlers Apartments will be provided

**Over Snow:** 2 trips IN and 2 trips OUT included to assist with your luggage.

[Click Here To See Mt Hotham Village Directory](#)

## KITCHEN & COOKING FACILITIES

---

Full Kitchen - Oven, Microwave, Full Size Fridge, Dishwasher

## BEDROOMS & BEDDING CONFIGURATION

---

Bedroom 1: 1 x Double Bed

Bedroom 2: 1 x Double Bed

Bedroom 3: 2 x Single Bunk Beds

Linen, Towels and Bedding is provided for all beds.

## BATHROOMS

---

1 x Bathroom

## HEATING & COOLING FACILITIES

---

Hydronic Central Heating

## LAUNDRY DETAILS

---

- Washing Machine
- Dryer

## ENTERTAINMENT FACILITIES

---

TV, DVD Player

## EXTRA FACILITIES

---

Drying Cupboard



## PARKING

---

1 x Lawlers overnight car park - **Resort Entry will need to be purchased**

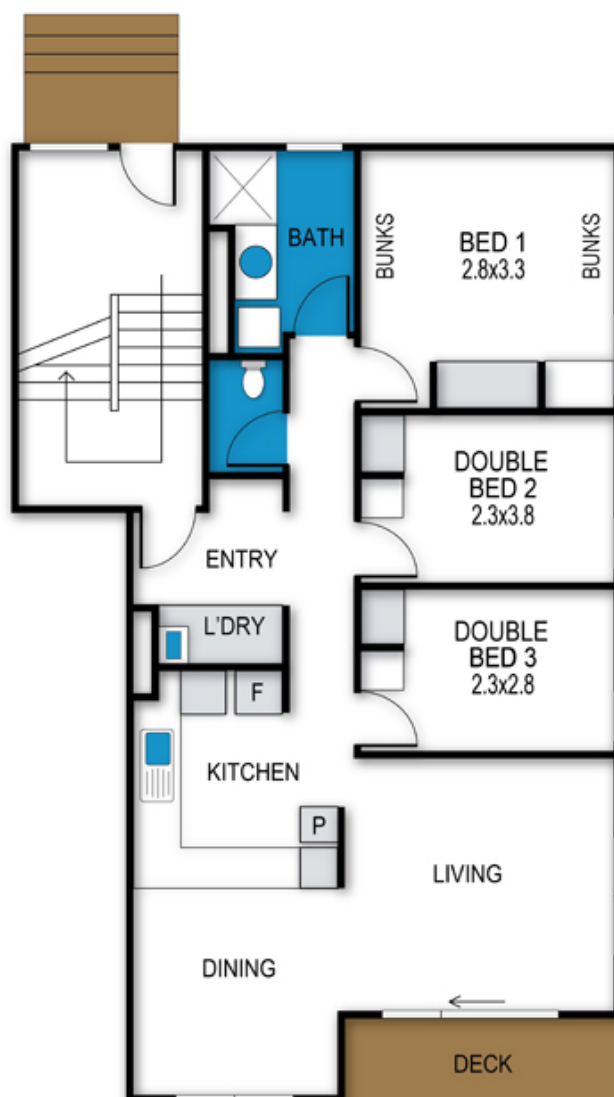
## SMOKING

---

This is a Non-Smoking Apartment

## Lawlers Apartments, Apartment 44

44/Building 4 - Lawlers Court, Mount Hotham



archistyle

Whilst every attempt has been made to ensure the accuracy of this floorplan, measurements of doors, windows, rooms and any other items are approximate only. The producer or the agent cannot be held responsible for any errors, omissions or misstatements. This plan is for illustrative purposes only and should be used as such.

# Lawlers 44

44/Building 5 - Alfonso Walk, Hotham Heights, VIC. 3741



MT HOTHAM  
ACCOMMODATION

