

Alpine Heights 04

4/6 Lawlers Court, Hotham Heights, VIC. 3741



MT HOTHAM
ACCOMMODATION



FEATURES:



6 Occupancy



1 Bedroom



1 Bathroom

ABOUT THIS PROPERTY

The One Bedroom 6 Share Apartments is perfect for families or a group of friends on a getaway. The fully equipped kitchen makes it ideal to self cater if you wish. It offers a dining and lounge area with a flat-screen TV and DVD player. There is also a drying room for your wet gear at the end of the day.

Check-In: After 4pm **Check-out:** Before 10am.

Over Snow: 1 trip IN and 1 trip OUT included to assist with your luggage.

[Click Here To See Mt Hotham Village Directory](#)

KITCHEN & COOKING FACILITIES

Oven, Toaster, Electric Kettle, Kitchenware, Electric cook top, full size fridge, convection microwave

BEDROOMS & BEDDING CONFIGURATION

Bedroom 1: 1 x Bunk & 1 x Tri-Bunk (Double & Single on Top) & Trundle Bed

BATHROOMS

1 bathroom

HEATING & COOLING FACILITIES

Hydronic Heating

LAUNDRY DETAILS

Guest Laundry - Coin Operated

ENTERTAINMENT FACILITIES

Flat- Screen TV, DVD Player

EXTRA FACILITIES

- Swimming Pool
- Spa
- Sauna

PARKING

Hotham overnight car parking - **Resort Entry will need to be purchased**

SMOKING

This is a Non-Smoking Apartment

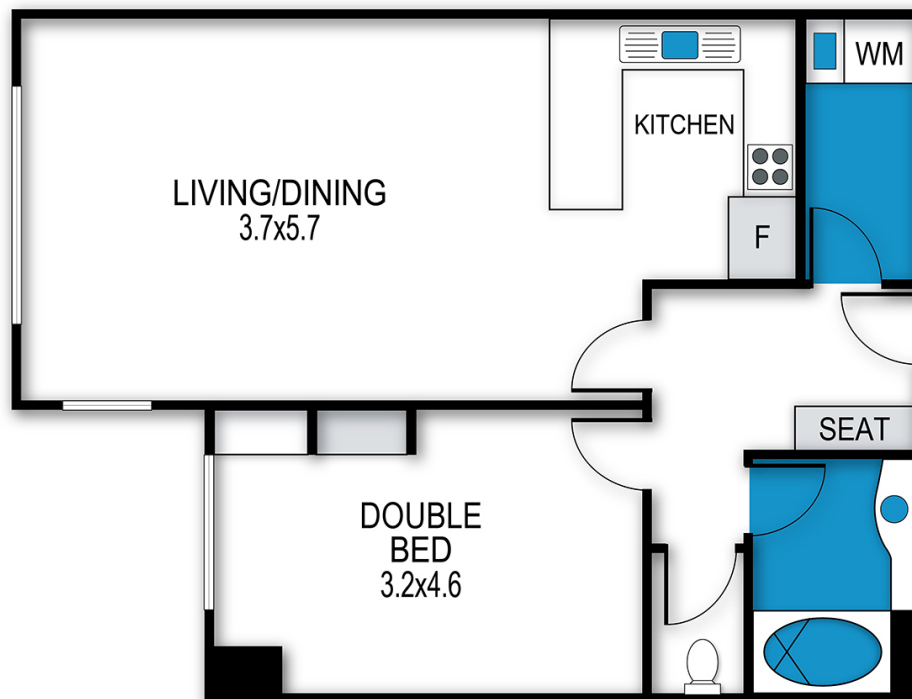
Alpine Heights 04

4/6 Lawlers Court, Hotham Heights, VIC. 3741



Alpine Heights, Apartment 4

4/6 Lawlers Court, Mount Hotham



archistyle

Whilst every attempt has been made to ensure the accuracy of this floorplan, measurements of doors, windows, rooms and any other items are approximate only. The producer or the agent cannot be held responsible for any errors, omissions or misstatements. This plan is for illustrative purposes only and should be used as such.

Alpine Heights 04

4/6 Lawlers Court, Hotham Heights, VIC. 3741



MT HOTHAM
ACCOMMODATION

