

Schnapps 6

6 Hot Plate Drive, Hotham Heights, Mount Hotham 3741



FEATURES:



5 Occupancy



2 Bedroom



2 Bathroom



1 Car Parking

ABOUT THIS PROPERTY

Schnapps 6 is a perfectly positioned two bedroom apartment in Central Mt Hotham. With a car park coming off the heated road the access into Schnapps for your arrival is one of the fastest and easiest on the mountain, maximising your time to enjoy everything Mt Hotham has to offer.

Located 200m from the main Village chairlift & Hotham Central, access to the ski slopes, shops & restaurants is simple, with no need for catching the Village Bus.

The apartment itself is a comfortable two bedroom, two bathroom single story unit that sleeps 5 guests. The apartment complex comes with a ski locker for each apartment.

Check-In: After 4pm Check-out: Before 10am

[Click Here To See Mt Hotham Village Directory](#)

KITCHEN & COOKING FACILITIES

Full Kitchen
Full Size Fridge
Full Size Oven
Microwave
4 Burner Cooker
Dishwasher

BEDROOMS & BEDDING CONFIGURATION

This property sleeps 5 people.

There are 2 Bedrooms with the following configuration.

Bedroom 1: 1 x King Bed*

Bedroom 2: 1 x King Bed*, 1 x Single Bed

*King can be split into 2 single beds, please call the office to request

Linen, Towels and Bedding is provided for all beds.

BATHROOMS

2 Bathrooms - both ensuites

One ensuite with Shower over Bath & Vanity

Second ensuite with Shower, Toilet & Vanity

HEATING & COOLING FACILITIES

Heating - Electric Panel

LAUNDRY DETAILS

Washing Machine
Tumble Dryer
Drying Room for Ski Gear

ENTERTAINMENT FACILITIES

Smart TV

PARKING

Car Parking - Undercover with heated driveway

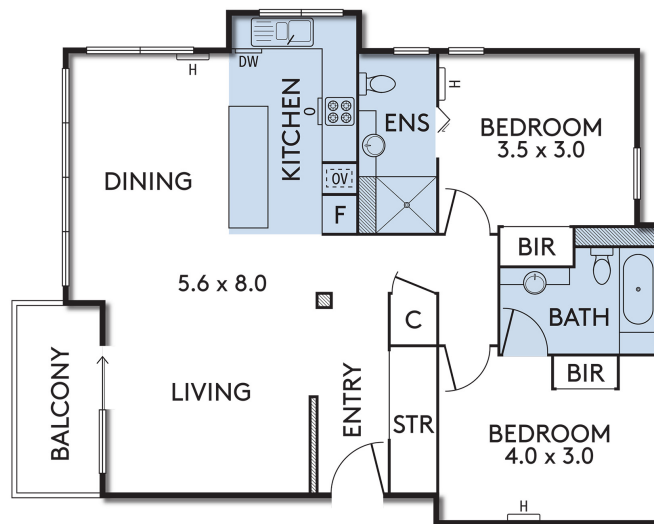
PETS

Strictly no pets accepted

SMOKING

Strictly no smoking indoors

C6 SCHNAPPS APARTMENTS MOUNT HOTHAM



TOTAL FLOOR SIZE 82.85SQM (APPROX)

THE ABOVE PLAN IS AN ARTIST'S IMPRESSION ONLY, IT INCLUDES ELEMENTS THAT ARE FOR DISPLAY PURPOSES ONLY AND MAY NOT BE TO SCALE.
LANDSCAPING SHOWN IS INDICATIVE ONLY. DIMENSIONS ARE APPROXIMATE.