

# 1750 Hotham - 4

4/5 Higgi Drive, Hotham Heights, VIC. 3741



## FEATURES:

---



4 Occupancy



1 Bedroom



1 Bathroom



1 Car Parking



Dish Washer



Strict NO Party Policy



Strict NO Pets Accepted



Linen Included

## ABOUT THIS PROPERTY

---

1750 Hotham is located on the Great Alpine Road within easy reach of the main Village chair, Hotham Central and the bus that runs down to the Big D. Every Hotham 1750 apartment has amazing Mountain views. 1750 Hotham Apartment 4 is located in a premium position right on the top of Mt Hotham and is ideal for a couple or small families who are wanting to be near all the action, yet still have all the privacy and outlook that 1750 Hotham is known for. Access to the apartment is now even easier with the addition of a car park. You can drive right up the to the entranceway and unload the car at your own pace.

**Resort access permits are still required through [Alpine Easy Access](#) for the duration of your stay.**

**Check-In: After 4pm Check-out: Before 10am**

## KITCHEN & COOKING FACILITIES

---

Full Kitchen - Oven, Microwave, Dishwasher, 3/4 Size Fridge, Lavazza Mio Coffee Machine - Pods not supplied

## BEDROOMS & BEDDING CONFIGURATION

---

Studio: 1 x Queen Bed, 1 x Bunk Bed

Linen & Towels are provided for all beds.

## BATHROOMS

---

1 x Bathroom

## HEATING & COOLING FACILITIES

---

Electric panel heating (centrally controlled)

## ENTERTAINMENT FACILITIES

---

Smart TV

## EXTRA FACILITIES

---

Personal Drying Cupboard

## PARKING

---

1 x 1750 Hotham car park - **Resort Entry will need to be purchased**

## PETS

---

Strict no pet policy

## SMOKING

---

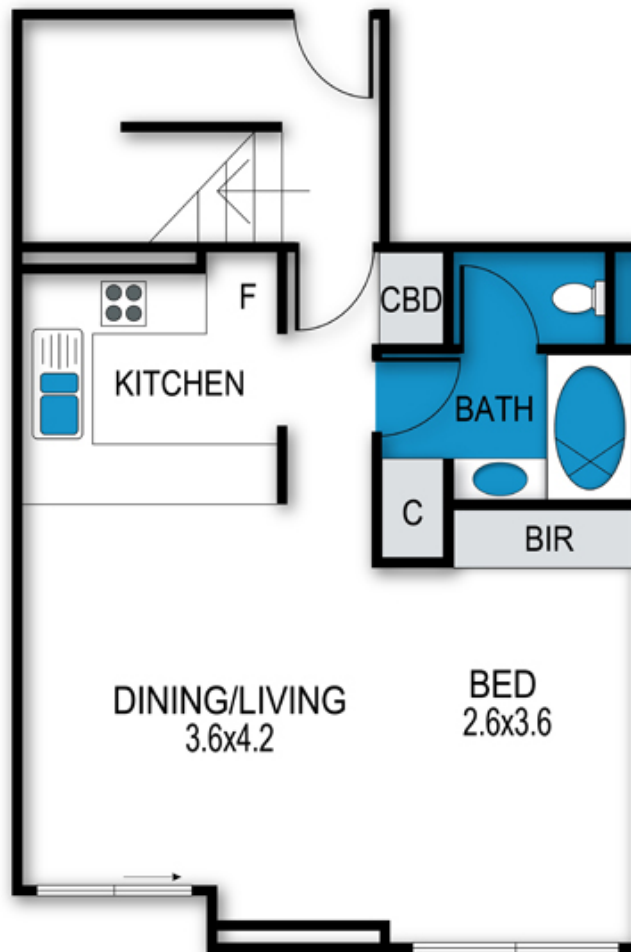
This is a Non-Smoking Apartment

# 1750 Hotham - 4

4/5 Higgi Drive, Hotham Heights, VIC. 3741

## 1750 Hotham, Apartment 4

4\_5 Higgi Drive, Mt Hotham



archistyle

Whilst every attempt has been made to ensure the accuracy of this floorplan, measurements of doors, windows, rooms and any other items are approximate only. The producer or the agent cannot be held responsible for any errors, omissions or misstatements. This plan is for illustrative purposes only and should be used as such.

# 1750 Hotham - 4

4/5 Higgi Drive, Hotham Heights, VIC. 3741



MT HOTHAM  
ACCOMMODATION

