

Razorback 6

6/2 Razorback Access, Hotham Heights, VIC. 3741



FEATURES:



10 Occupancy



3 Bedroom



3 Bathroom



Washing Machine

ABOUT THIS PROPERTY

Razorback apartments have some of the most commanding views of Mt Hotham and the ranges beyond. NB - Gas log fire not in operation. These North facing apartments are bathed in sun on those perfect Hotham bluebird days where you can sit and just enjoy the natural beauty Hotham has to offer. Razorback 6 is a three-level, three-bedroom, three-bathroom apartment with a private balcony.

Check-In: After 4pm **Check-out:** Before 10am

Over Snow: 2 trips IN and 2 trips OUT included to assist with your luggage.

[Click Here To See Mt Hotham Village Directory](#)

KITCHEN & COOKING FACILITIES

Full Kitchen - Oven, Microwave, Full Size Fridge, Dishwasher

BEDROOMS & BEDDING CONFIGURATION

Bedroom 1: 1 x Queen Bed

Bedroom 2: 1 x Queen Bed

Bedroom 3: 3 x Bunk Beds

Linen, Towels and Bedding is provided for all beds.

BATHROOMS

3 x Bathrooms

HEATING & COOLING FACILITIES

Electric panel heaters

LAUNDRY DETAILS

- Washing Machine
- Dryer

ENTERTAINMENT FACILITIES

TV, DVD Player, Sound System

EXTRA FACILITIES

- Personal Drying Cupboard
- Spa Bath

PARKING

Hotham overnight car parking - **Resort Entry will need to be purchased**

SMOKING

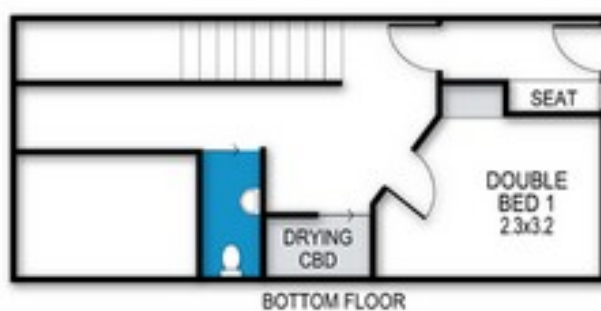
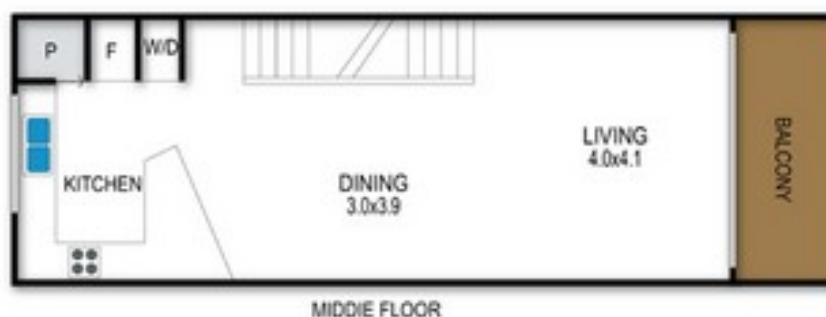
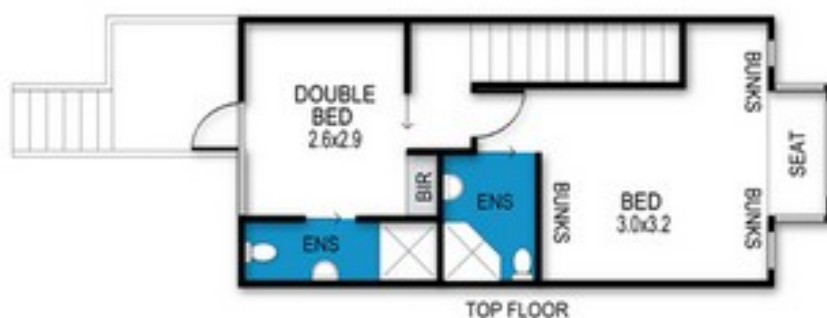
Razorback 6

6/2 Razorback Access, Hotham Heights, VIC. 3741

This is a Non-Smoking Apartment

Razorback, Apartment 6

6_2 Razorback Acc, Mt Hotham



archistyle

Whilst every attempt has been made to ensure the accuracy of this floorplan, measurements of doors, windows, rooms and any other items are approximate only. The producer or the agent cannot be held responsible for any errors, omissions or misstatements. This plan is for illustrative purposes only and should be used as such.

Razorback 6

6/2 Razorback Access, Hotham Heights, VIC. 3741



MT HOTHAM
ACCOMMODATION

